

**CAM for your needs....**

# BEYOND IMAGINATION... WE MAKE THE MOST COMPLEX TECHNOLOGIES SIMPLE.

---

## About us

CAD MACRO IS AN 16 YEARS OLD INDIAN CAD / CAM SOFTWARE DEVELOPMENT COMPANY IN THE MARKET WITH A SOILD CLIENTS ACROSS PAN INDIA AND AROUND THE WORLD. IT'S BEEN OUR PLEASURE TO ADDRESS THE ENTIRE TOOL ROOM, MACHINE SHOP INDUSTRY WITH PRODUCTS RANGING FROM WIRE EDM, MILLING, LATHE, PRESS TOOL AND A TOOL ROOM MES / ERP CALLED SHOP PLAN. THE EXPERTISE IS GATHERED OVER A DECADE WITH NEVER TIRING JOURNEY TO SUPPORT OUR LARGE CLIENT BASE AND TO PROVIDE SOLUTIONS THAT ARE BEST IN CLASS.

## BENCHMARKS OF CAD MACRO DESIGN & SOLUTIONS

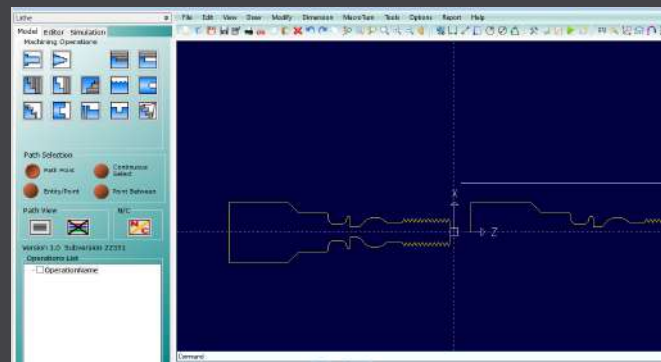
- Having more than 80% stake in the Wire EDM software and successful in supporting all OEM's in Wire EDM Segment.
- We have gained more than 1000's clients across Pan India and around the world
- The Leading Solution provider for Tool Room / Engineering Management with wide range of Products
- We developed our product with our build in CAD Engine for Drafting & NC Editor to modify NC before machining



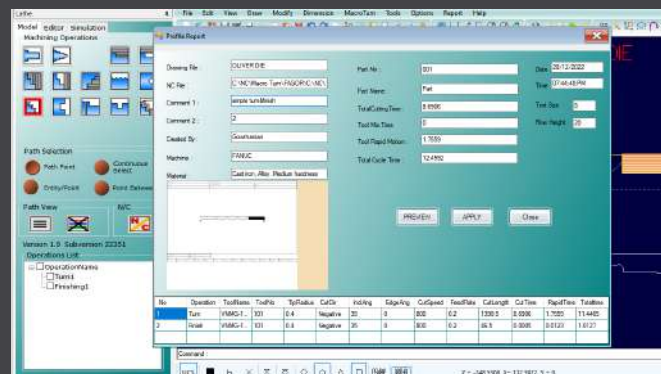
# CNC TURNING SOLUTIONS

## MACRO TURN

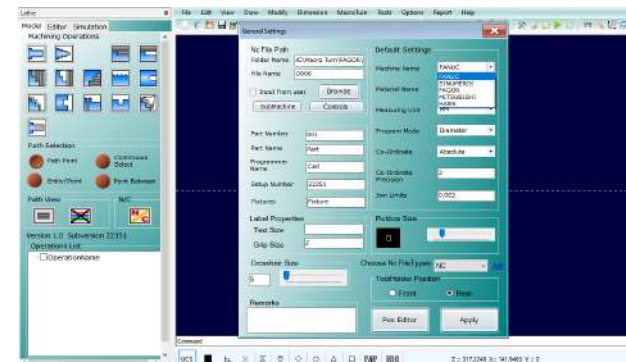
- Turning
- Facing
- Drilling
- Grooving
- Boring
- Back Boring
- External Threading
- Internal Threading
- Cycle Program & Normal Program
- Job Sheet
- Parting
- Multi start Threading
- NC Editor
- Simulation



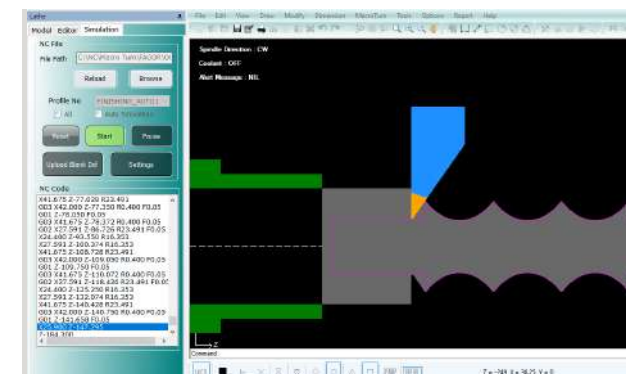
CAD 2D Drafting



Tool Selection



Machine Settings



Simulation

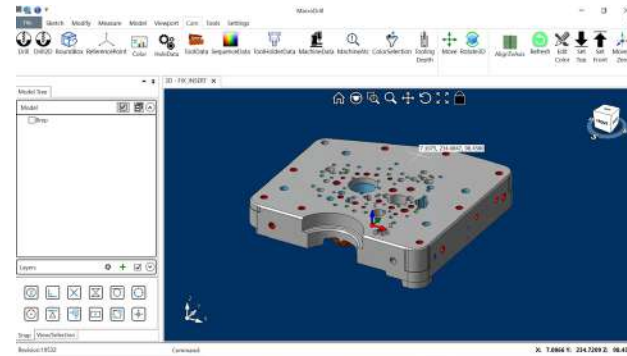
- CAD Editing
- Tool Library
- Insert Library
- Cycle Time Calculation
- Open Profile Maching
- Knurling & Bar Pulling
- Ball, Spiral Maching
- Auto Tool Nose Calculation
- Simulation & Collision Check
- Quil Call & Return
- Groove Finish in Multidirections for OD & ID



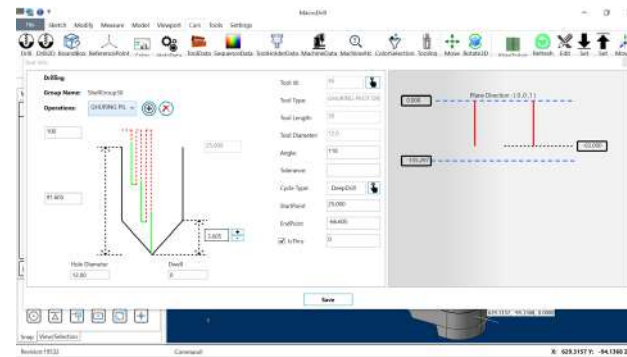
# CNC MILLING SOLUTION

## MACRO MILL

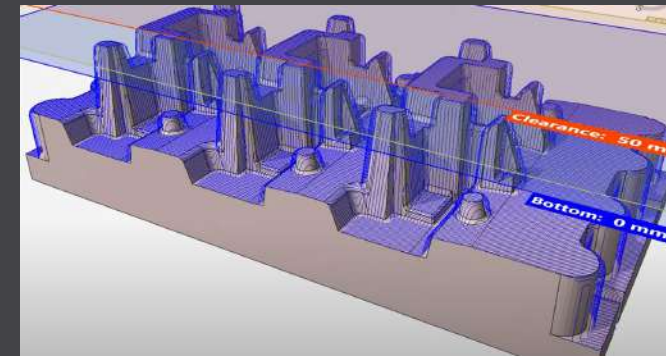
- Hole Feature Deduction
- Feature verification
- Hole Sorting
- Simulation
- Facing, Drilling
- Boring,Cycles
- Thread Milling
- Chamfering,Sketching
- Modify tools
- Color code features
- Machine Tool Master
- Machine Station Tools
- Auto Tool selection
- Job Sheet, Tool Sheet
- NC Editor
- 3D/2.5D Contour
- 3D/2.5D Pocketing
- 3D/2.5D Open Machining



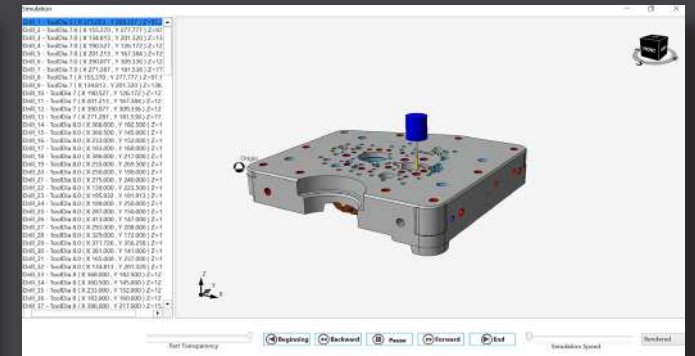
Model View



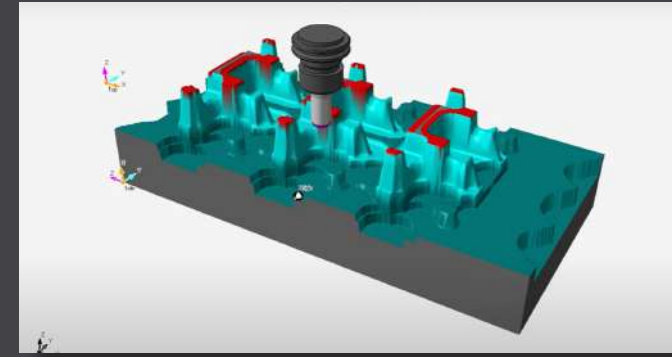
Setting / Tool Selection



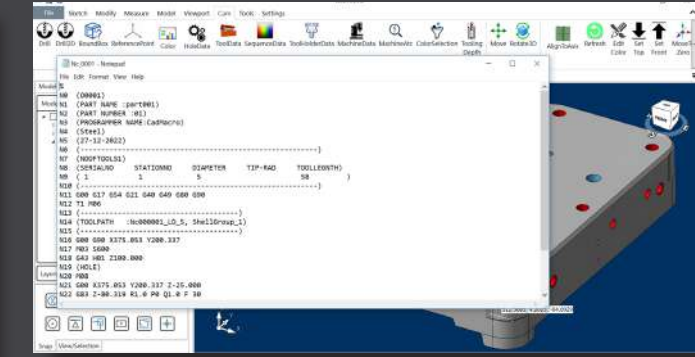
3D Tool Path



Simulation



Simulation & Collision

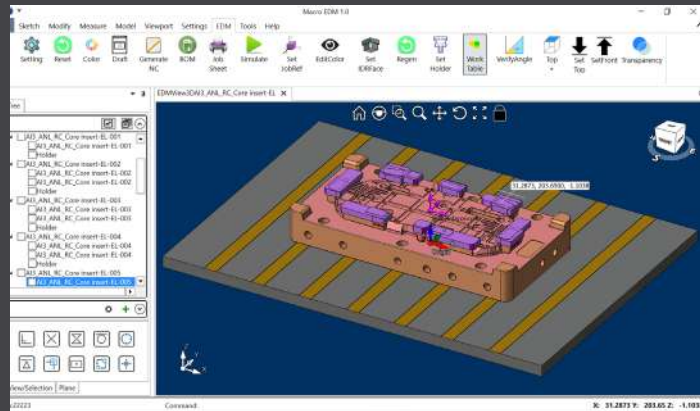


NC Editor

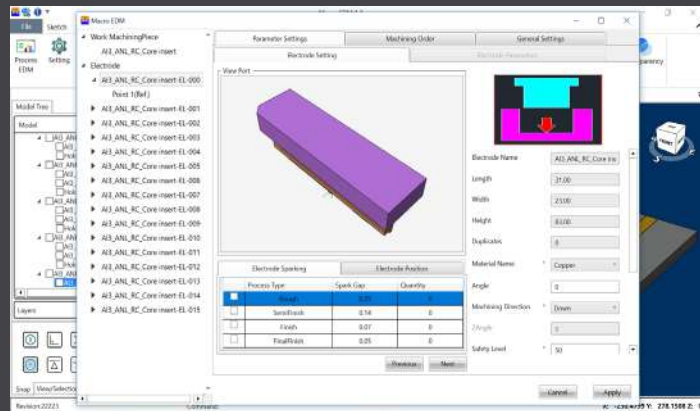
# CNC EDM SINKER SOLUTION

## MACRO EDM

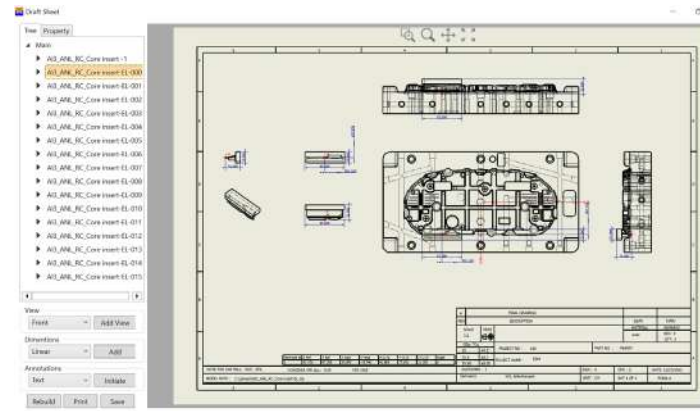
- Automated Drafting
- Flexible Detailing Templates
- 2D Auto Detail
- Real time Simulation
- Spark area Finding
- Auto Detection IDR point
- Electrode Position Identification
- Taper Maching
- Parameter calling
- Nc Generation
- Tool Offset
- CMM Data Exchange
- Job Sheet
- Auto Detection Rotation/ Positions



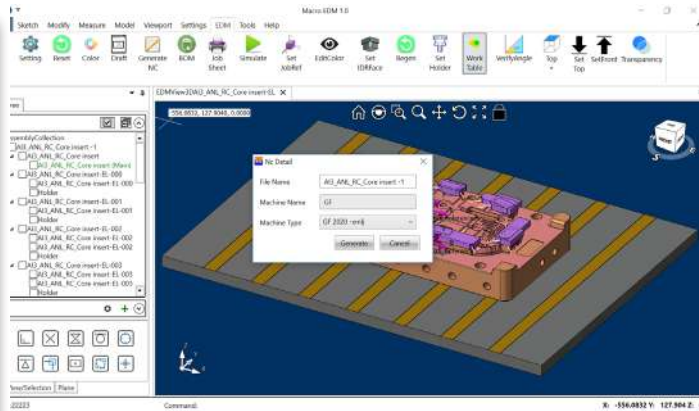
Electrode model



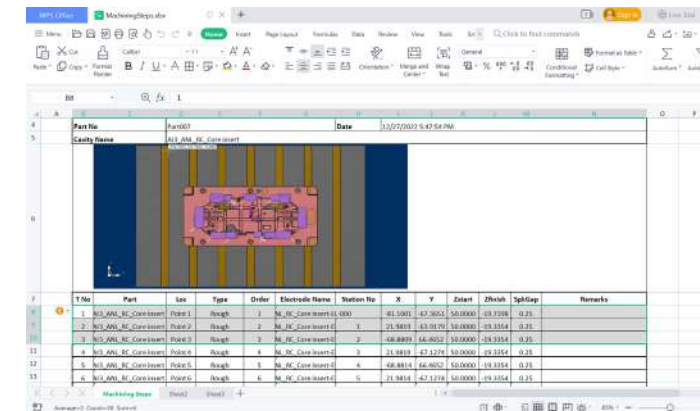
Electrode Settings



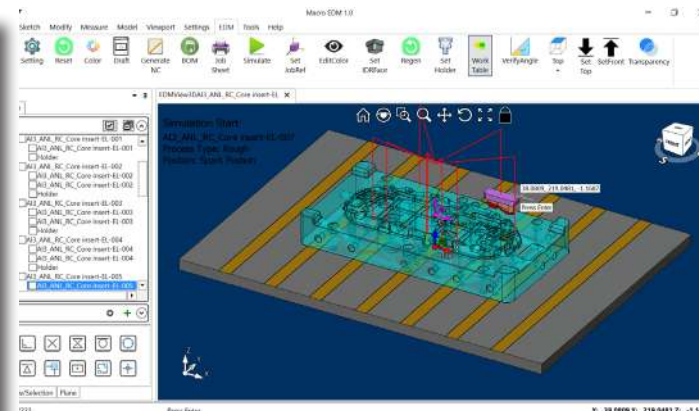
Setting Sheet



NC Generation



Job Sheet

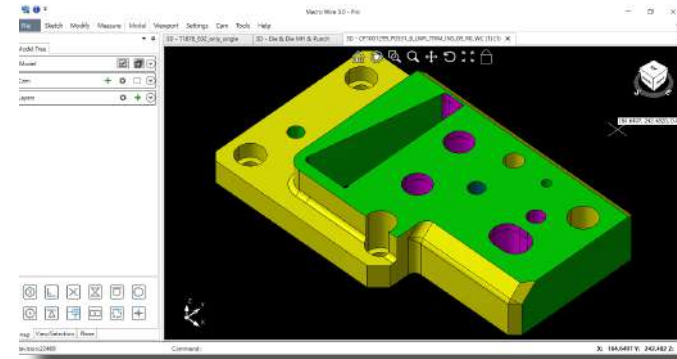


Simulation

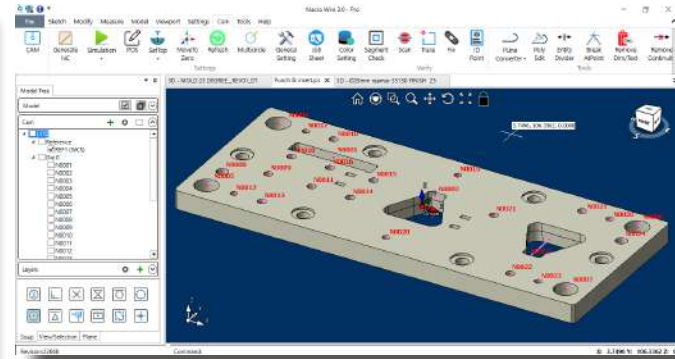


# WIRE EDM SOLUTION

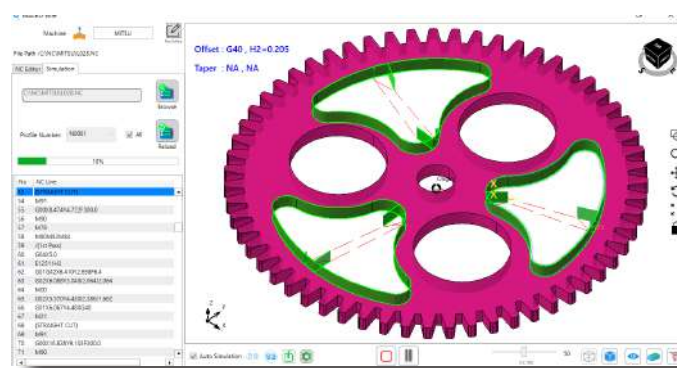
## MACRO WIRE



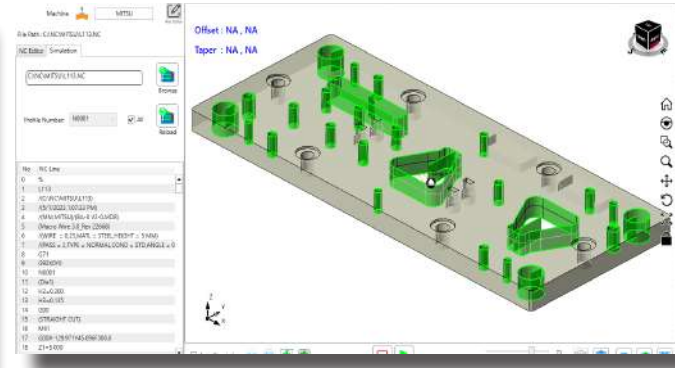
Model Viewer



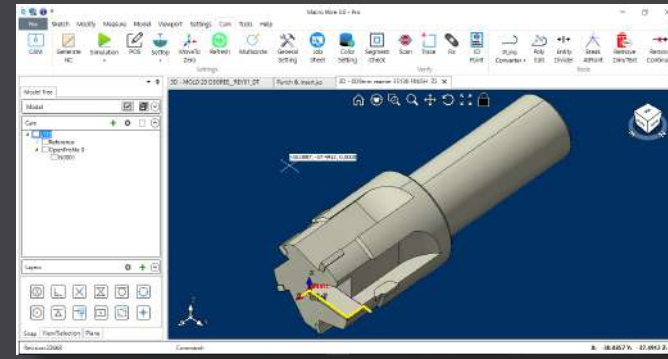
Selection



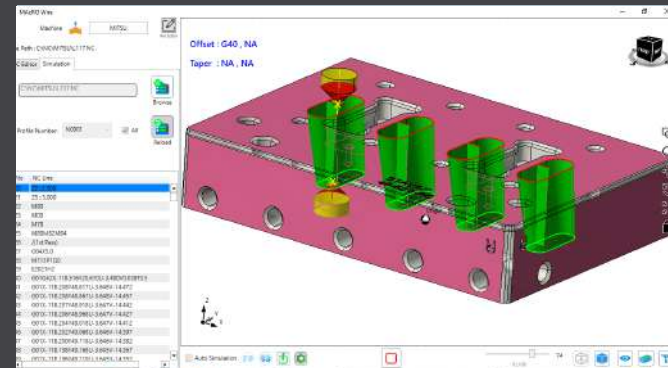
Multi Hold



Simulation



Rotary for Cutting tools

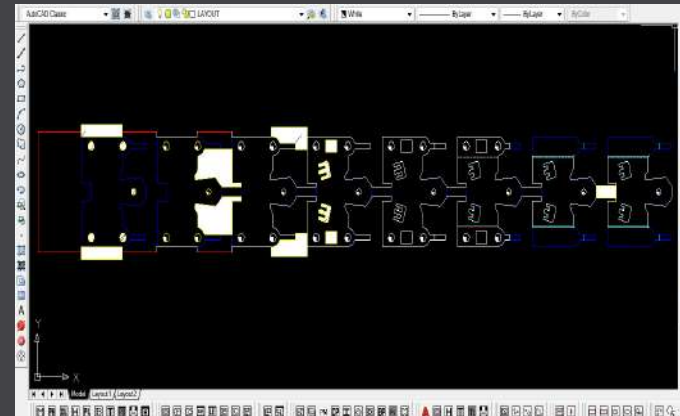


4 Axis Cutting

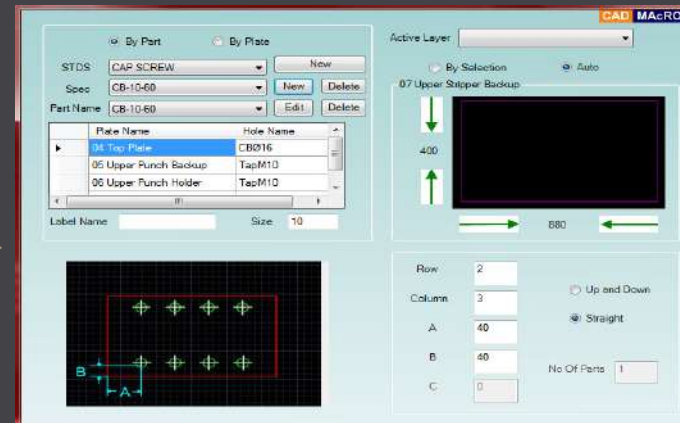
- 2D/3D Drafting / Sketching
- 4 Axis Manual / Auto Mapping
- Unman Cutting
- Insert Cutting
- Punch, Die, Open Profile Cutting
- Similar Hole / Color / All Selection
- Chipless, Gear Drafting
- Import / Modify / Replicate / Rotate
- 3D Model, 6th Axis Program Auto Fix
- 6 Axis Cutting With Probing
- Hole Listing / Identification
- Pre Defined Strategy
- Vast Parameter Database
- Multi Hold Cutting
- Multi POS processor
- Multi Hold POS Setting Simulation
- Job Report

# TOOL DESIGN AND DETAILING MACRO DESIGN

- Dynamic & Pre-Defined Die Structures
- Automatic BOM Reporting Feature
- Automatic Material usage weight and Scrap Weight Calculation
- Auto Layout Creation and Simulation
- Hole Creation and Insertion (Dowell, Cap Screws, Stripper bolt, etc)
- Dynamic and Pre-defined Profile Creation (Piercing, Blanking profile, Bending, etc.)
- Punch / Die / Insertion
- Dynamic and Pre-Defined Standard Parts
- Customizable Standard Part Specifications.
- Hole Listing
- Auto Dimensioning Feature
- Ballooning and Sectioning
- Exporting WireCut & CNC Milling



Strip Layout



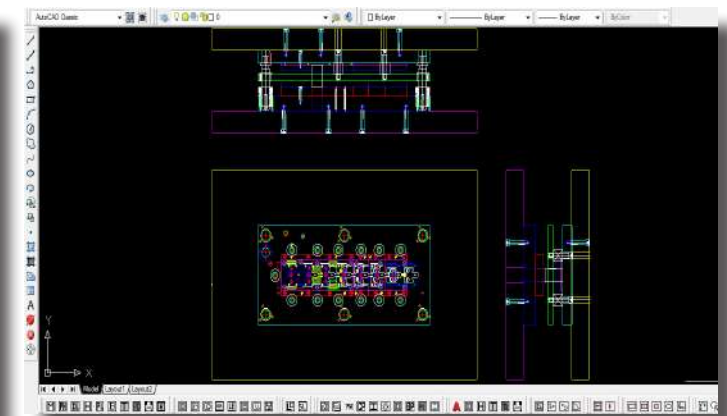
Hole Insertion



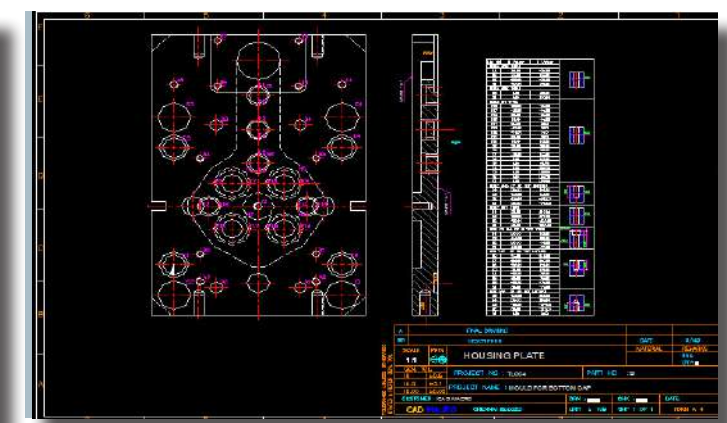
Auto DIM



Plate Manager



Assembly Drawing



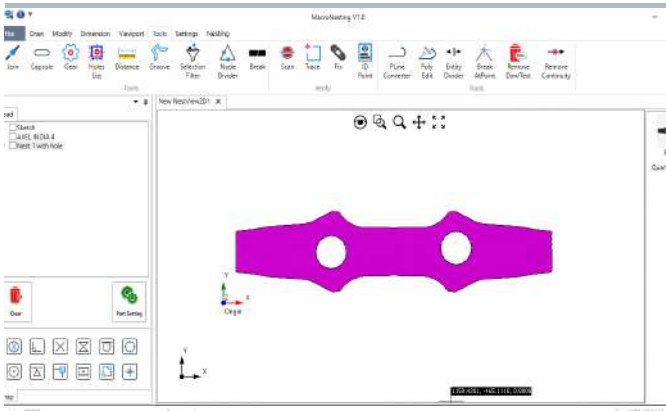
Hole Chart & 2D Detail



# SHEET METAL NESTING & CAM

## MACRO NEST

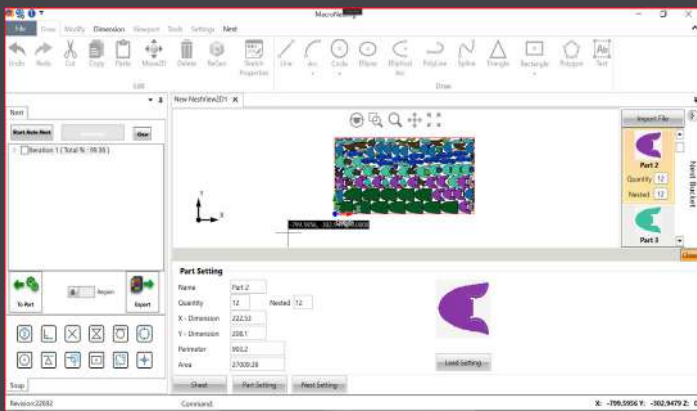
- Supporting DXF/DWG
- Auto Fix
- Extended ERP Appraoch
- NC Editor / Simulation
- Nesting Job Sheet
- Robust Placement Parameters
- Regular Sheet Support
- Multiple Projections Handling
- Tab Features
- Cooling Stops
- Manual Nesting
- Various Approches
- Cut Sheet assignment



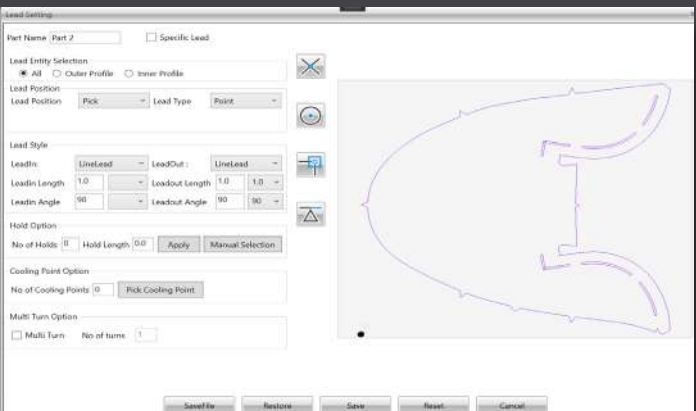
Draft

Part Setting - Auto Nest													
IsAutoNest	Image	PartName	XDIm	YDIm	Perimeter	Mirror	Qty	Rotation	Priority	Text	Lead Setting	Corner Setting	
<input checked="" type="checkbox"/>		Part 1	309.49	204.34	895.13	<input type="checkbox"/>	1	0	1		Lead Option	Corner Option	
<input checked="" type="checkbox"/>		Part 2	222.53	208.1	903.2	<input type="checkbox"/>	1	0	1		Lead Option	Corner Option	
<input checked="" type="checkbox"/>		Part 3	210.3	198.54	851.38	<input type="checkbox"/>	1	0	1		Lead Option	Corner Option	
<input checked="" type="checkbox"/>		Part 4	288.48	97.4	690.13	<input type="checkbox"/>	1	0	1		Lead Option	Corner Option	
<input checked="" type="checkbox"/>		Part 5	145.43	190.31	585.2	<input type="checkbox"/>	1	0	1		Lead Option	Corner Option	
<input checked="" type="checkbox"/>		Part 6	211.88	119.55	650.58	<input type="checkbox"/>	1	0	1		Lead Option	Corner Option	
<input checked="" type="checkbox"/>		Part 7	147.9	107.21	420.86	<input type="checkbox"/>	1	0	1		Lead Option	Corner Option	
<input checked="" type="checkbox"/>		Part 8	147.45	107.21	420.87	<input type="checkbox"/>	1	0	1		Lead Option	Corner Option	
<input checked="" type="checkbox"/>		Part 9	164.17	108.61	482.57	<input type="checkbox"/>	1	0	1		Lead Option	Corner Option	
<input checked="" type="checkbox"/> Select All												No of Product 1	
Back Save Restore													

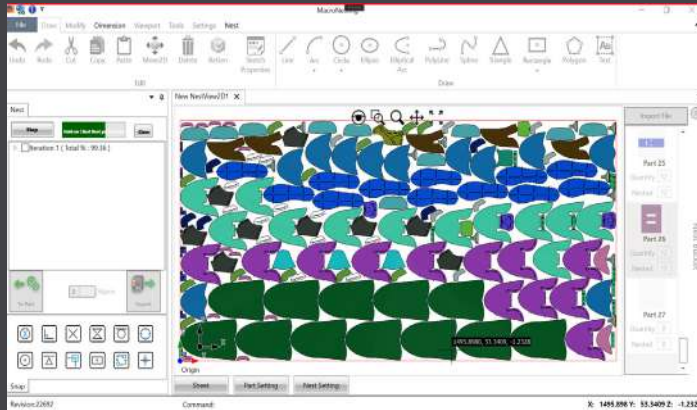
Part List



Manual Part Setting



Cutting Mode Setting



Nested View

Task Sheet						
S.no	Sheet Image	Sheet Size	Parts Count	Total Cut Length	Sheet Utilization	Cutting Time
1		2400 x 1200mm	190	78027.05mm	99.36%	185:15 hour

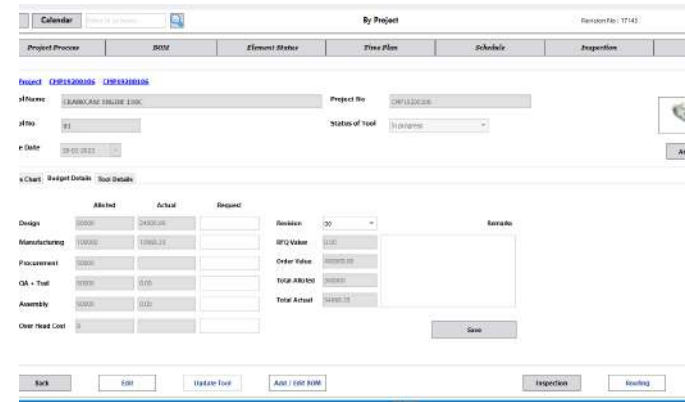
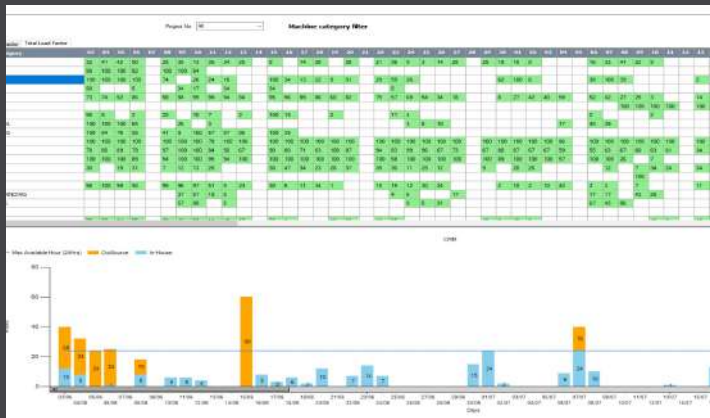
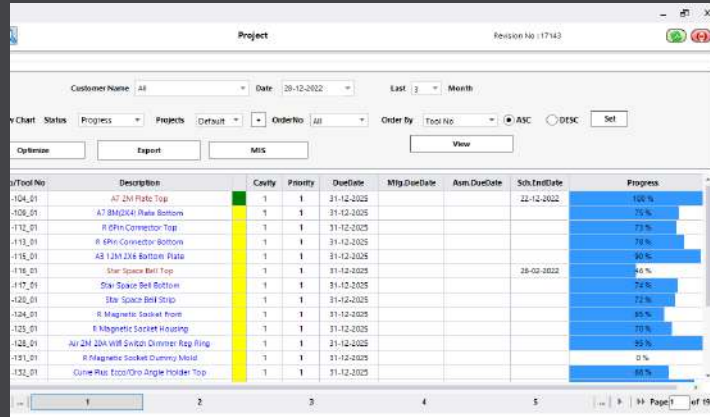
S.no	Part Name	Part Image	Part Size	Part Count	Nest Count	Remain Count	Cutting Time
1	Part 1		309.49 x 204.34mm	12	12	0	1 Hrs:34 Min
2	Part 2		222.53 x 208.1mm	12	12	0	2 Hrs:17 Min
3	Part 3		210.3 x 198.54mm	12	12	0	1 Hrs:30 Min

Job Sheet

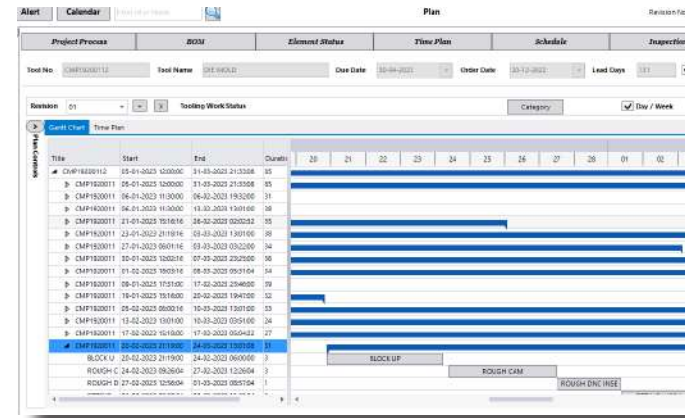


# MES / ERP / PLANNING / SCHEDULING

## SHOP PLAN



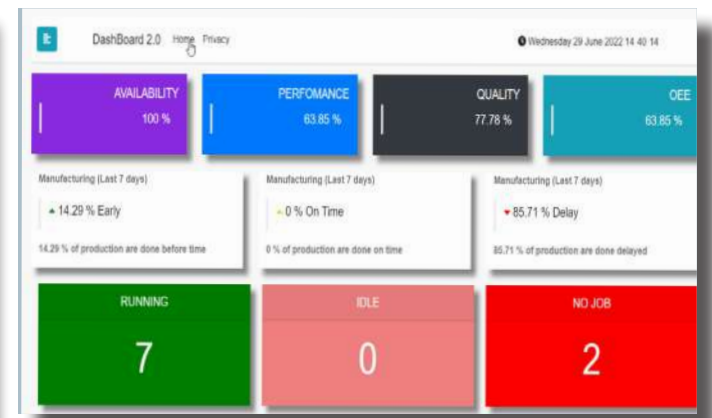
## Budget Allocation



## Gantt Chart



## Project Status Report



## OEE Dashboard






- Mold Master
- Tooling guide
- Repair procedures.
- Mold /Die Data Base including Sub Molds
- PM & RM Maint Alerts
- Spare Inventory with Std Part Datas.
- Service History with Costing
- Other ERP data Integration
- Root Cause analysis
- Tool Life tracking
- Inspections reports too.
- Predict and analysis to keep spares
- Easy to Monitor shop efficiency
- Mold Status & Location Tracking



ADD MODEL

DOWNLOAD TEMPLATE

IMPORT TEMPLATE

MODEL NAME		RECEIPTS	CASH BILLS	BILL LOG	FAULTS	WARRANTY
	<b>LIGHT CASIN</b> JABOX Mfg Year :2020	10000	10000	10000	4	17-10-2022
	<b>REAR SEAT GUARD</b> JABOX Mfg Year :2020	10000	10000	10000	4	17-10-2022
	<b>SF NEEDLE HUB 200</b> 10-04 Mfg Year :2012	60000	60000	60000	94	17-10-2022
	<b>SF HUB COVER</b> 10-01 Mfg Year :2010	60000	60000	60000	94	17-10-2022
	<b>SF THREADED STOPPER</b> 10-02 Mfg Year :2015	60000	60000	60000	94	17-10-2022

1

2

3

4

5

6

7

8

9

10

11

12

13

14

15

16

17

18

19

20

1

2

3

4

5

6

7

8

9

10

11

12

13

14

15

16

17

18

19

20

1

2

3

4

5

6

7

8

9

10

11

12

13

14

15

16

17

18

19

20

1

2

3

4

5

6

7

8

9

10

11

12

13

14

15

16

17

18

19

20

1

2

3

4

5

6

7

8

9

10

11

12

13

14

15

16

17

18

19

20

1

2

3

4

5

6

7

8

9

10

11

12

13

14

15

16

17

18

19

20

1

2

3

4

5

6

7

8

9

10

11

12

13

14

15

16

17

18

19

20

1

2

3

4

5

6

7

8

9

10

11

12

13

14

15

16

17

18

19

20

1

2

3

4

5

6

7

8

9

10

11

12

13

14

15

16

17

18

19

20

1

2

3

4

5

6

7

8

9

10

11

12

13

14

15

16

17

18

19

20

1

2

3

4

5

6

7

8

9

10

11

12

13

14

15

16

17

18

19

20

1

2

3

4

5

6

7

8

9

10

11

12

13

14

15

16

17

18

19

20

1

2

3

4

5

6

7

8

9

10

11

12

13

14

15

16

17

18

19

20

1

2

3

4

5

6

7

8

9

10

11

12

13

14

15

16

17

18

19

20

1

2

3

4

5

6

7

8

9

10

11

12

13

14

15

16

17

18

19

20

1

2

3

4

5

6

7

8

9

10

11

12

13

14

15

16

17

18

19

20

1

2

3

4

5

6

7

8

9

10

11

12

13

14

15

16

17

18

19

20

1

2

3

4

5

6

7

8

9

10

11

12

13

14

15

16

17

18

19

20

1

2

3

4

5

6

7

8

9

10

11

12

13

14

15

16

17

18

19

20

1

2

3

4

5

6

7

8

9

10

11

12

13

14

15

16

17

18

19

20

1

2

3

4

5

6

7

8

9

10

11

12

13

14

15

16

17

18

19

20

1

2

3

4

5

6

7

8

9

10

11

12

13

14

15

16

17

18

19

20

1

2

3

4

5

6

7

8

9

10

11

12

13

14

15

16

17

18

19

20

1

2

3

4

5

6

7

8

9

10

11

12

13

14

15

16

17

18

19

20

1

2

3

4

5

6

7

8

9

10

11

12

13

14

15

16

17

18

19

20

1

2

3

4

5

6

7

8

9

10

11

12

13

14

15

16

17

18

19

20

1

2

3

4

5

6

7

8

9

10

11

12

13

14

15

16

17

18

19

20

1

2

3

4

5

6

7

8

9

10

11

12

13

14

15

16

17

18

19

20

1

2

3

4

5

6

7

8

9

10

11

12

13

14

15

16

17

18

19

20

1

2

3

4

5

6

7

8

9

10

11

12

13

14

15

16

17

18

19

20

1

2

3

4

5

6

7

8

9

10

11

12

13

14

15

16

17

18

19

20

1

2

3

4

5

6

7

8

9

10

11

12

13

14

15

16

17

18

19

20

1

2

3

4

5

6

7

8

9

10

11

12

13

14

15

16

17

18

19

20

1

2

3

4

5

6

7

8

9

10

11

12

13

14

15

16

17

18

19

20

1

2

3

4

5

6

7

8

9

10

11

12

13

14

15

16

17

18

19

20

1

2

3

4

5

6

7

8

9

10

11

12

13

14

15

16

17

18

19

20

1

2

3

4

5

6

7

8

9

10

11

12

13

14

15

16

17

18

19

20

1

2

3

4

5

6

7

8

9

10

11

12

13

14

15

16

17

18

19

20

1

2

3

4

5

6

7

8

9

10

11

12

13

14

15

16

17

18

19

20

1

2

3

4

5

6

7

8

9

10

11

12

13

14

15

16

17

18

19

20

1

2

3

4

5

6

7

8

9

10

11

12

13

14

15

16

17

18

19

20

1

2

3

4

5

6

7

8

9

10

11

12

13

14

15

16

17

18

19

20

1

2

3

4

5

6

7

8

9

10

11

12

13

14

15

16

17

18

19

20

1

2

3

4

5

6

7

8

9

10

11

12

13

14

15

16

17

18

19

20

1

2

3

4

5

6

7

8

9

10

11

12

13

14

15

16

17

18

19

20

1

2

3

4

5

6

7

8

9

10

11

12

13

14

15

16

17

18

19

20

1

2

3

4

5

6

7

8

9

10

11

12

13

14

15

16

17

18

19

20

1

2

3

4

5

6

7

8

9

10

11

12

13

14

15

16

17

18

19

20

1

2

3

4

5

6

7

8

9

10

11

12

13

14

15

16

17

18

19

20

1

2

3

4

5

6

7

8

9

10

11

12

13

14

15

16

17

18

19

20

1

2

3

4

5

6

7

8

9

10

11

12

13

14

15

16

17

18

19

20

1

2

3

4

5

6

7

8

9

10

11

12

13

14

15

16

17

18

19

20

1

2

3

4

5

6

7

8

9

10

11

12

13

14

15

16

17

18

19

20

1

2

3

4

5

6

7

8

9

10

11

12

13

14

15

16

17

18

19

20

1

2

3

4

5

6

7

8

9

10

11

12

13

14

15

16

17

18

19

20

1

2

3

4

5

6

7

8

9

10

11

12

13

14

15

16

17

18

19

20

1

2

3

4

5

6

7

8

9

10

11

12

13

14

15

16

17

18

19

20

1

2

3

4

5

6

7

8

9

10

11

12

13

14

15

16

17

18

19

20

1

2

3

4

5

6

7

8

9

10

11

12

13

14

15

16

17

18

19

20

1

2

3

4

5

6

7

8

9

10

11

12

13

14

15

16

17

18

19

20

1

2

3

4

5

6

7

8

9

10

11

12

13

14

15

16

17

18

19

20

1

2

3

4

5

6

7

8

9

10

11

12

13

14

15

16

17

18

19

20

1

2

3

4

5

6

7

8

9

10

11

12

13

14

15

16

17

18

19

20

1

2

3

4

5

6

7

8

9

10

11

12

13

14

15

16

17

18

19

20

1

2

3

4

5

6

7

8

9

10

11

12

13

14

15

16

17

18

19

20

1

2

3

4

5

6

7

8

9

10

11

12

13

14

15

16

17

18

19

20

1

2

3

4

5

6

7

8

9

10

11

12

13

14

15

16

17

18

19

20

1

2

3

4

5

6

7

8

9

10

11

12

13

14

15

16

17

18

19

20

1

2

3

4

5

6

7

8

9

10

11

12

13

14

15

16

17

18

19

20

1

2

3

4

5

6

7

8

9

10

11

12

13

14

15

16

17

18

19

20

1

2

3

4

5

6

7

8

9

10

11

12

13

14

15

16

17

18

19

20

1

2

3

4

5

6

7

8

9

10

11

12

13

14

15

16

17

18

19

20

1

2

3

4

5

6

7

8

9

10

11

12

13

14

15

16

17

18

19

20

1

2

3

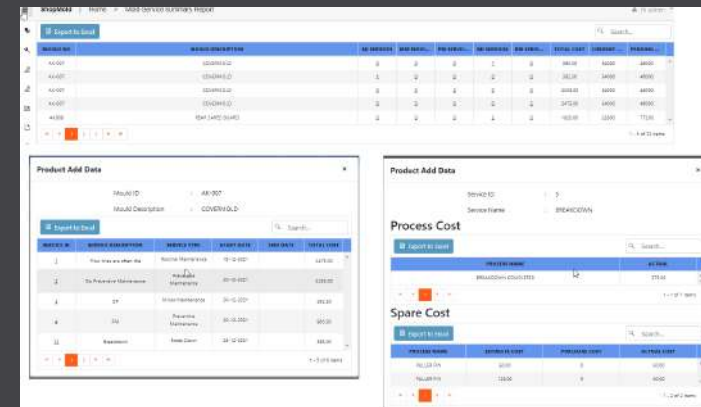
4

5

6

7

8

[illegible]

Dynamic page sizes change

[ADD NEW SHARES](#)
















[PURCHASE REQUESTS](#)

[Purchase Entry](#)

[DOWNLOAD TEMPLATE](#)

[IMPORT TEMPLATE](#)

Drag a share token and drop it on the group to that column.

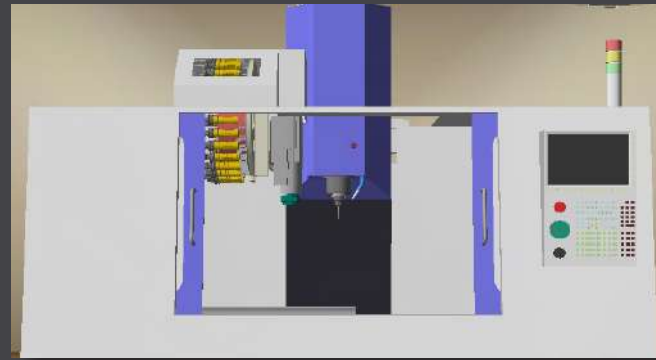
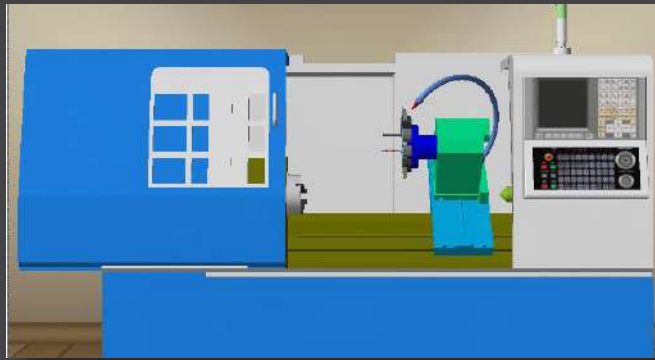
	ITEM CODE	MATERIAL	TECHNICAL	STOCK UNIT	REORDER...	MIN STY	MAX STY	STOCK UNIT
<div><div></div><div></div><div></div></div>	<b>SOCKET HEAD</b> ITSM005 Rate : 5	1	10000	<div></div>	50	100	100	
<div><div></div><div></div><div></div></div>	<b>ELECTOR PIN</b> ITSM001 Rate : 5	1	100000	<div></div>	10	10	10	
<div><div></div><div></div><div></div></div>	<b>SHCS</b> ITSM004 Rate : 10	1	100000	<div></div>	10	10	10	
<div><div></div><div></div><div></div></div>	<b>SHCS</b> ITSM010 Rate : 8	1	100000	<div></div>	10	10	10	
<div><div></div><div></div><div></div></div>	<b>MT</b> EBT1 Rate : 0	0	10000000	<div></div>	0	0	0	

Mold No	Mold Description	Drawing Code	PM to Over	PM to Reach	PM to Alert	Cycle
GM001-20	BELLA 12M BOTTOM	DWG435667	25000	25000	21000	25000
GM002-20	K9 3&M BOTTOM PLATE	RTR002245	15000	15000	10000	15000
GM003-20	ESSENZ KIT FUSE	ASN45T34R	25000	25000	22000	25000
GM004-20	LED BULB HOLDER (Small)	DWG561254	45000	45000	41000	45000
GM005-20	LED BULB HOLDER (Big)	DWG601180	4000	4000	3500	4000
TM001-15	CRACKER HOUSE	TM04001-15	900	900	700	900
TM002-15	REAR BRAKE DRUM	RE04001-15	5	5	3000	2000
TM003-15	FRONT BRAKE DRUM	FED-0001-20	500	500	4500	25000
TM004-15	HCEPIVOLVO COVER	MDL-331-65	900	900	4100	5000
TM005-15	REAR WHEEL HUB	MB420210	800	800	4200	2000

# CNC TRAINER / SIMULATOR

## CNC SIMULATOR

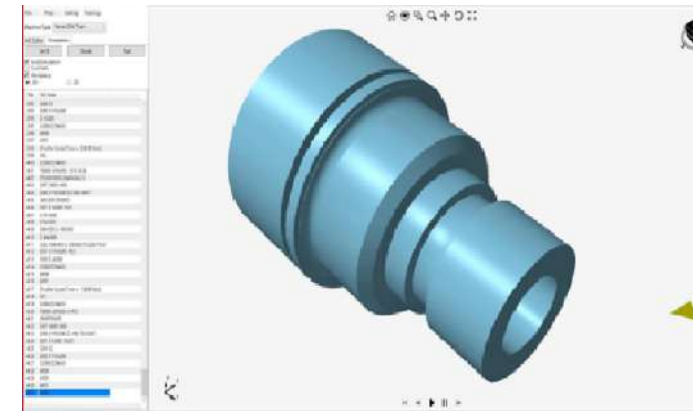
- Easy machine learning by real world simulation of CNC machines.
- User can set the job with plain or wear offset.
- Realistic Simulation with Jog and Machine movement along with measure feature.
- Ability for user interaction during simulation.
- Interactive NC program compilation and validation with rich post processors.
- PC based machine learning for multiple users.
- Avoids damage of job/ machine, collision, human errors also reduces fear of machine approach.
- CNC trainer provides robust features for Programming/ Operation training ITI's, Diploma & Engineering Colleges, Skill development centers and so on.



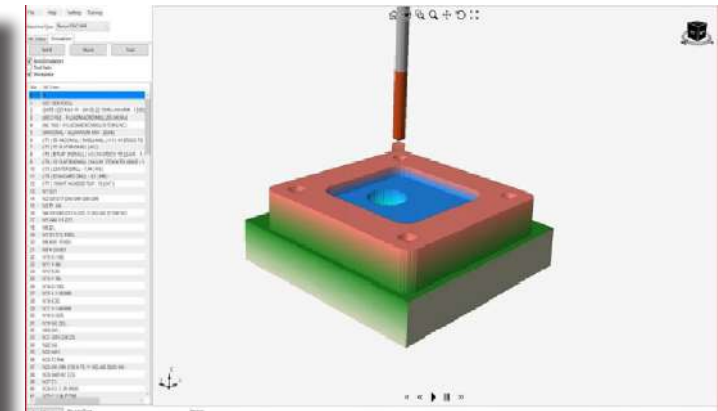
Multiple Familiar Controllers



PC Simulator / CNC Simulator MIMIC Panel



Turn Simulation



Mill Simulation



# OUR OEM & CLIENTS



Behind the CAD Macro 15+ years of international design & development experience. We take a direct, real-world approach to design, allowing you to easily respond to changes and make revisions with minimum effort. As well as giving you a massive increase in speed and efficiency. We work with organizations from a broad range of industries. From tool shops to OEM's

At CAD Macro, we realize the value of using the latest technology available to create the best quality design possible. That's why we leverage the leading, most up to-date software in the industry.

Our specialist knowledge in a variety of industries enables us to realize innovative solutions by linking people, technologies and ideas. With around 30+ dedicated technical specialists in the field, we are capable of building and integrating new and innovative technologies into relevant industrial digital solutions for our customers.

CAD Macro is an established developer of innovative CAD/CAM solutions, Industrial productive tools which optimize the production time and manpower. Design develop complete IT solutions tailored to your industrial needs.

Our team of consultants, solution architects, project managers, training specialists, and technical analysts come from manufacturing industry.

# OUR PRESENCE

---

**MALAYSIA / TAIWAN**  
**CAD MAcRO (M) Sdn Bhd,**  
M3 19, Plaza Damas,  
Sri Hartamas, 50480,  
Kuala Lumpur, Malaysia.  
Tel / Fax: +60 012 2256901

**USA**  
**Vivek Systems Inc,**  
2163 Avon Industrial  
Drive, Rochester Hills,  
Tele 2482931070  
Fax: 2482931075

**SINGAPORE / INDONESIA**  
**ONE CLICK SOLUTIONS**  
10 Anson Road,  
#26-04 International Plaza,  
Singapore 079903  
Mobile: +65 9016 5538

**THAILAND**  
**Idea CNC Company Limited**  
89/122 Moo 15, Rachatewa,  
Bangplee, Samutprakarn,  
10540 THAILAND.  
Phone: +66-2-130-7983  
Mobile: 097-195-4845

**MUMBAI**  
Cad Macro Design &  
Solutions Pvt Ltd  
Mobile: +91 7303033055

**PUNE**  
Cad Macro Design &  
Solutions Pvt Ltd  
Mobile: +91 9011033831

**DELHI**  
Cad Macro Design &  
Solutions Pvt Ltd  
Mobile: +91 9344025088

**BANGALORE**  
Cad Macro Design &  
Solutions Pvt Ltd  
Mobile: +91 9590077455



Cad Macro Design & Solutions Pvt Ltd, #33, Sapthagiri Colony, KR Layout,  
Jafferkhanpet, Chennai - 600083, Tamilnadu, India.

+91 96000 13015 / 16    [www.cadmacro.com](http://www.cadmacro.com)  
044 - 4358 9050    [info@cadmacro.com](mailto:info@cadmacro.com)